

DT-116A

EXTREMA MACHINERY COMPANY, INC

PO BOX 1450, ALBANY, LA 70711
(877) 398-7362 TOLL FREE (225) 567-3867

GENERAL SAFETY RULES

There is a certain amount of hazard involved with the use of woodworking machinery. Using the machine with the respect and caution demanded as far as safety precautions are concerned will considerably lessen the possibility of personal injury. However, if normal safety precautions are overlooked or ignored, severe personal injury to the operator can occur.

1. Read the operation manual before operating this machine.
2. If you are not thoroughly familiar with the machine operation, obtain advice from a supervisor or other qualified person.
3. The machine should be disconnected from the power source before performing maintenance or adjustments to the internal mechanisms, or when making repairs.
4. After maintenance job is finished, check to see if there are any tools or objects left on the machine. Close all safety guards.
5. Before leaving the machine, make sure the work area is clean.
6. Check timber for loose knots, nails, or other items, which may cause a hazard or affect the machine's performance.
7. Learn the machine's applications and limitations, as well as the specific potential hazards peculiar to it. Keep the machine in top condition for best and safest performance.
8. Keep all guards in place and in working order.
9. Do not force the machine. It will do the job better and be safer working at the rate for which it was designed.
10. All children and visitors should be kept a safe distance from the working area.
11. The operator should keep proper footing and balance at all times.
12. Do not operate the machine while under the influence of drugs, alcohol, or any other medication.
13. Avoid awkward operations and hand positions where a sudden slip could cause your hand to move into the cutterhead.
14. Never leave the machine until it comes to a complete stop, and never leave the machine running unattended.
15. The employer is responsible for selecting competent and qualified employees.
16. The employer must make sure that employees study and utilize this safety information.
17. Supervisors must alert personnel of any unsafe practices they observe.
18. All employees should be aware of first aid facilities and be encouraged to use them, regardless of the severity of the injuries.
19. Fire prevention must be practiced and fire protection must be available to prevent loss of life, personal injury, and property damage.
20. Safety shoes should be worn to provide protection against rolling objects, falling objects, and sharp edges in the workplace.
21. Eye protection should be worn and such devices should be carefully selected, fitted and used. Compulsory wearing of glasses with impact resistant lenses and side shields is a good safety policy. All eye protection should conform to ANSI 87 standards.
22. Wear hearing protection when operating the machine.
23. Do not wear rings necklaces or jewelry around moving machinery.
24. Do not wear loose fitting clothes. Clothing should be comfortable, but long sleeves, neckties, etc. should not be worn.
25. Do not wear gloves or other hand covering articles around moving machinery.
26. Cover long hair with a hair net or cap.

27. Protective guards and shields must be in place at all times unless they must be removed for specific service or maintenance. They should be immediately replaced when service or maintenance is completed.
28. Make sure that operator clearly knows how to stop the machine before starting work.
29. Never clean or remove chips while the machine is running.
30. Maintain the machine in good operating condition. Report unusual conditions or machine malfunctions immediately.
31. Do not alter or remove guards and warning labels.
32. Keep the immediate area clean. Do not allow the floor to become slippery, or covered with dust or obstacles. Dust that accumulates in the work area is a hazard that can cause you to fall or slip against the machine or its controls.
33. Employees should be required to report to their supervisors any hazardous condition of the machine or in the immediate area.

SHIPPING & RECEIVING INSTRUCTIONS

This machine has been carefully inspected and tested before packing. It was delivered in good condition and was shipped in one wooden pallet.

When receiving this machine, inspect the wooden pallet and check to see if there is any damage. Then check the machine model and all items as according to the packing list.

If there is any damage on the machine or any missing parts, report it to your local distributor or the machine manufacturer immediately.

UNPACKING & CHECKING CONTENTS

The machine has been well packed at the manufacturer's factory and shipped in good condition. The machine is shipped in one wooden pallet.

Upon receiving the machine, carefully unpack it and check all items as according to the packing list.

If you find any part is missed or damaged, contact your local distributor or the manufacturer of the machine immediately. Do not attempt to operate the machine until the missing parts are obtained and are installed correctly.

CLEANING THE MACHINE

The machine is coated with rust preventative oil before shipment. When the machine has been moved to the proper work site, wipe the oil from the machine using a soft cloth soaked in

kerosene. Do not use gasoline, lacquer thinner, or any other volatile solvent, as these may damage the paint surface of the machine.

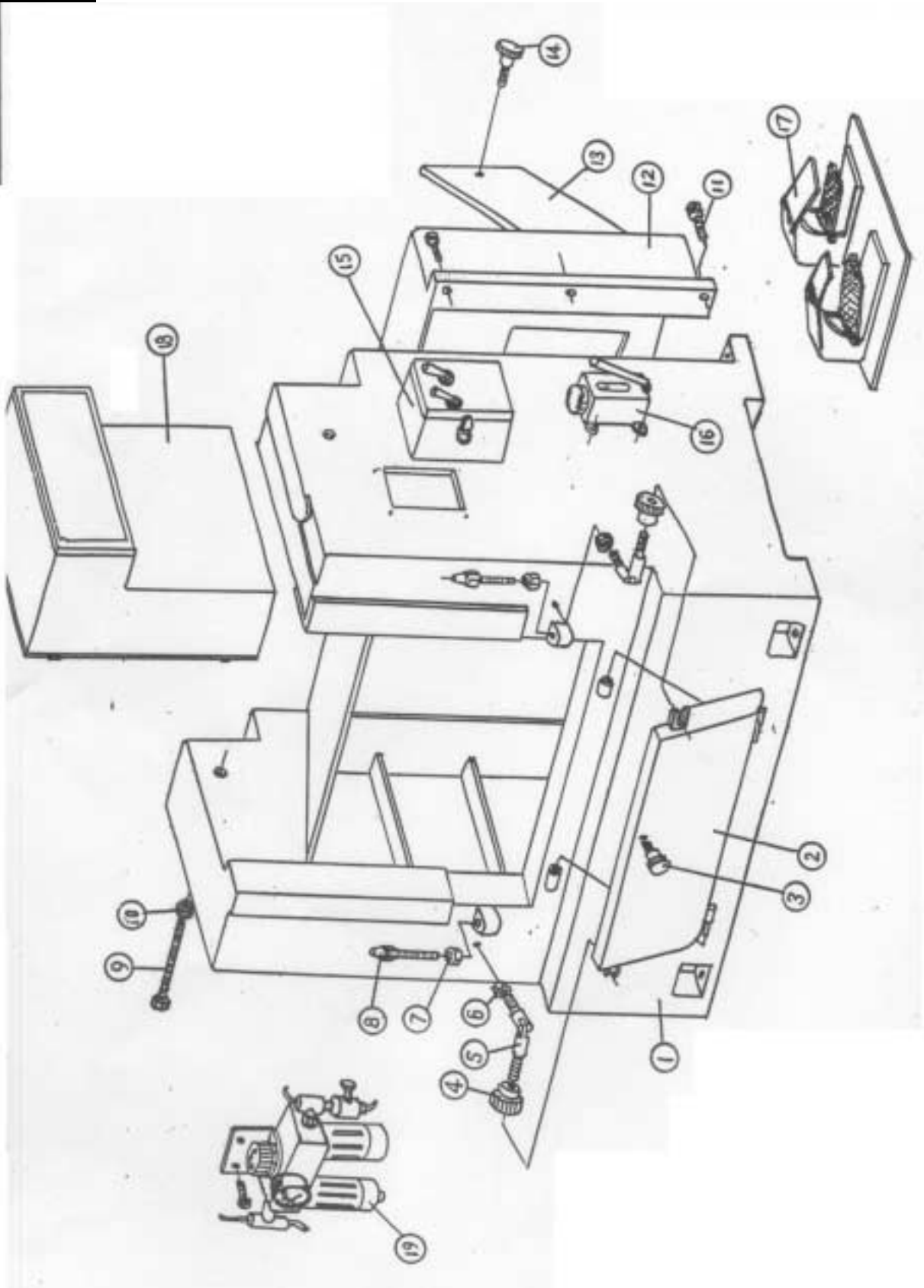
LIFTING THE MACHINE

The machine should be lifted or moved by a forklift. Make sure the loading capacity of the forklift is sufficient to raise the machine. Pay special attention to the machine balance while lifting the machine to prevent the machine from falling. The forks of the forklift must protrude over the machine bottom for uniform distribution of the entire machine weight.

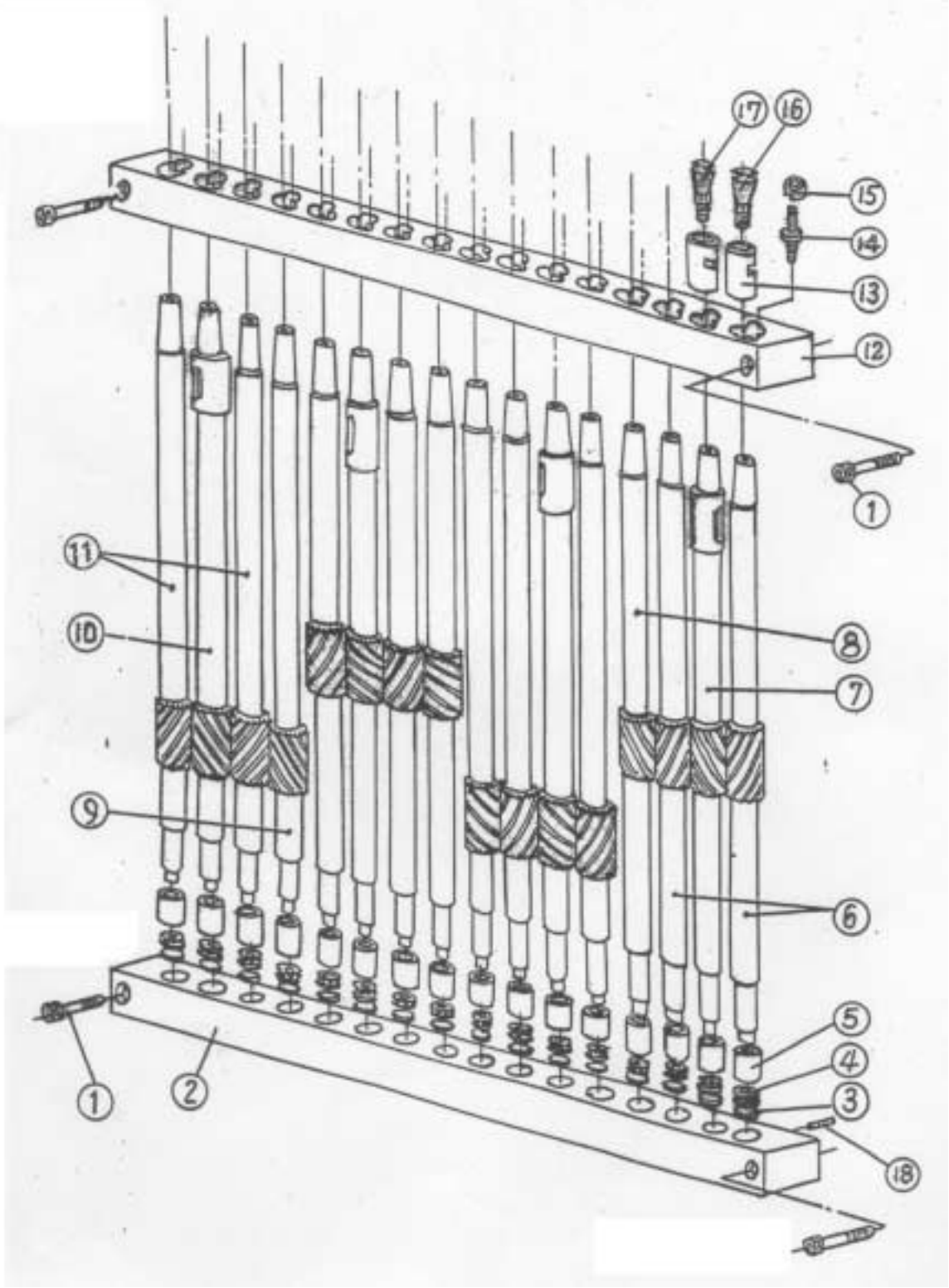
ELECTRICAL SAFETY RULES

1. Do not alter or bypass any protective interlock.
2. Before starting the machine, read and observe all warning labels and markings such as nameplates and identification plates.
3. Only personnel who are properly trained and have adequate knowledge and skill should undertake all electrical/electronic troubleshooting and repair.
4. Use extra precautions in damp areas to prevent yourself from accidental grounding.
5. Make sure your body and your tools are clear of electrical grounding.
6. The control panel doors should be opened only when it is necessary to check the electrical equipment or electrical wiring.
7. Before applying power to any equipment, establish without a doubt that all persons are clear.
8. Be alert and be sure you can work with no outside distractions.
9. Avoid wearing metal frame glasses or wearing a metallic necklace or chain, and never work on electrical equipment while wearing rings, watches, or bracelets.
10. When replacing conductors, make sure they conform to the manufacturer's specifications, including proper color-coding.
11. Do not alter the electrical circuits. If machine damage is caused by an unauthorized alteration, the user is responsible, not the manufacturer.
12. Always assume the electrical power is ON and treat circuit as live. This caution develops a habit that may prevent an accident.
13. Give capacitors time to discharge. Otherwise, it should be done manually with care.
14. Use proper test equipment to make certain you have an open circuit. Test equipment must be checked and calibrated at regular intervals.
15. Open the control panel doors only when it is necessary to check the electrical equipment or wiring. After closing the door, make sure the disconnecting means are operating with the disconnecting handle mechanism in its proper position.
16. All covers on junction boxes must be closed before leaving any job.

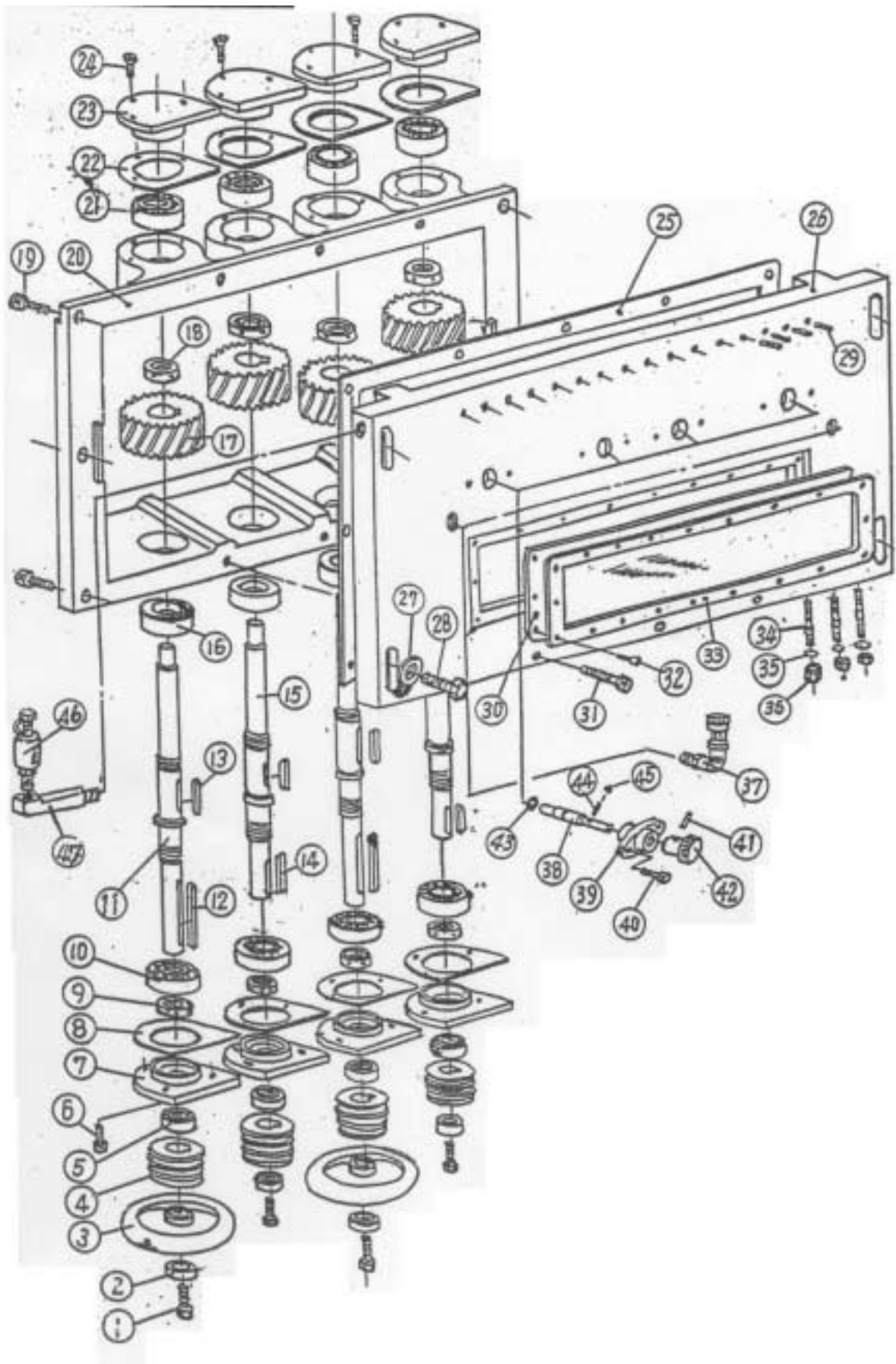
PARTS LIST



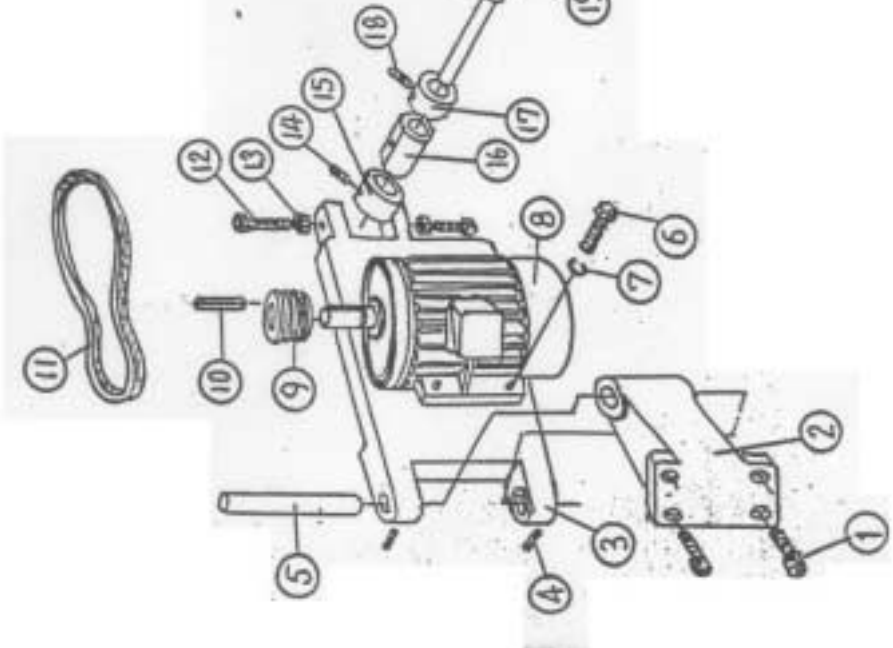
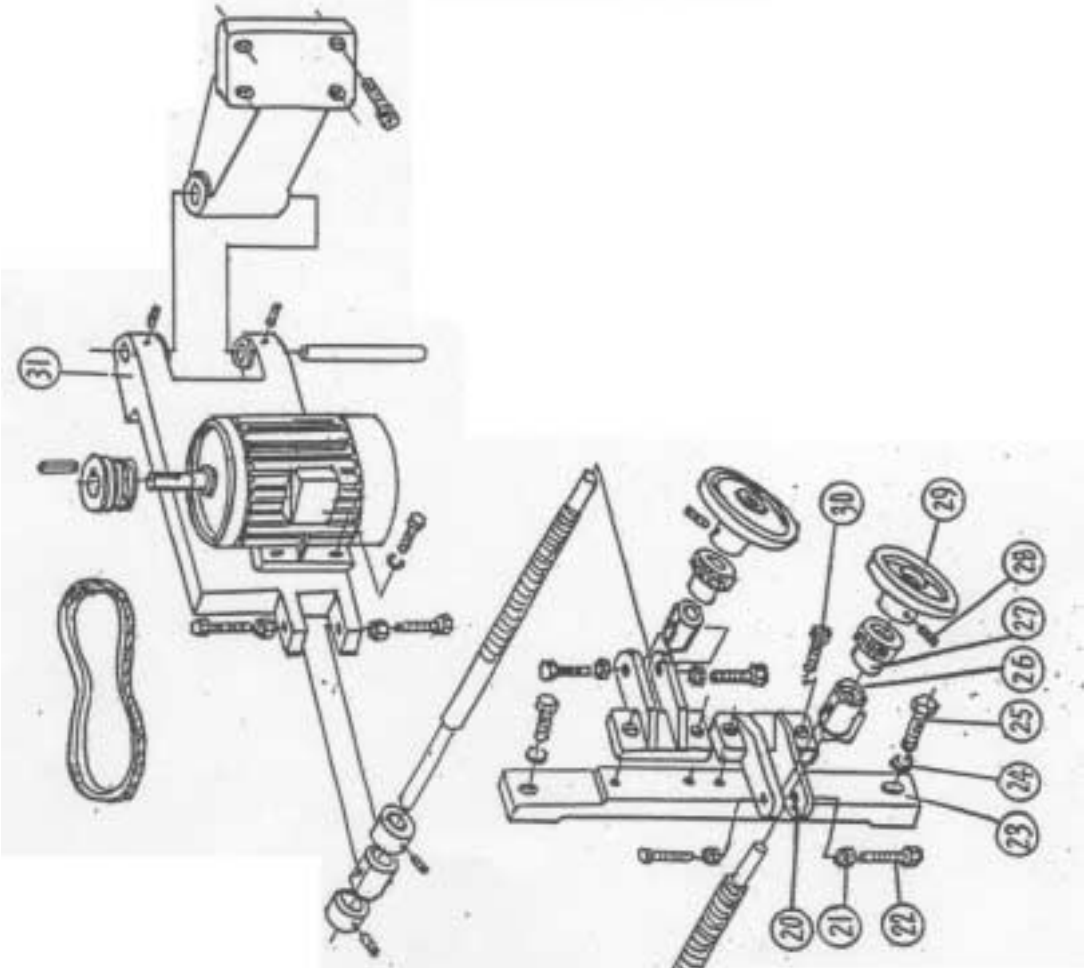
No	Description	Qty	Part No
1	Main Frame Set	1	163003
2	Front Cover	1	164084
3	Front Cover Knob	1	40123
4	Front Cover Fixing Screw Socket	2	40125
5	Front Cover Bolt	2	
6	Hexagonal Nut 5/16"	2	
7	Hexagonal Nut 1/2"	2	
8	Gearbox Adjustment Screw	2	
9	Hex Head Screw 1/2" x 4-1/2"	1	
10	Hexagonal Nut 1/2"	1	
11	Hex Head Screw 5/16" x 1-1/4"	1	
12	Back Cover	1	1640085
13	Back Cover Door	1	40086
14	Back Cover Knob	1	40125
15	Clamping Air Valve MC138021	2	
16	Oil Pump	1	
17	Pedal Control	1	
18	Electric Control Box	1	
19	Air Filter	1	



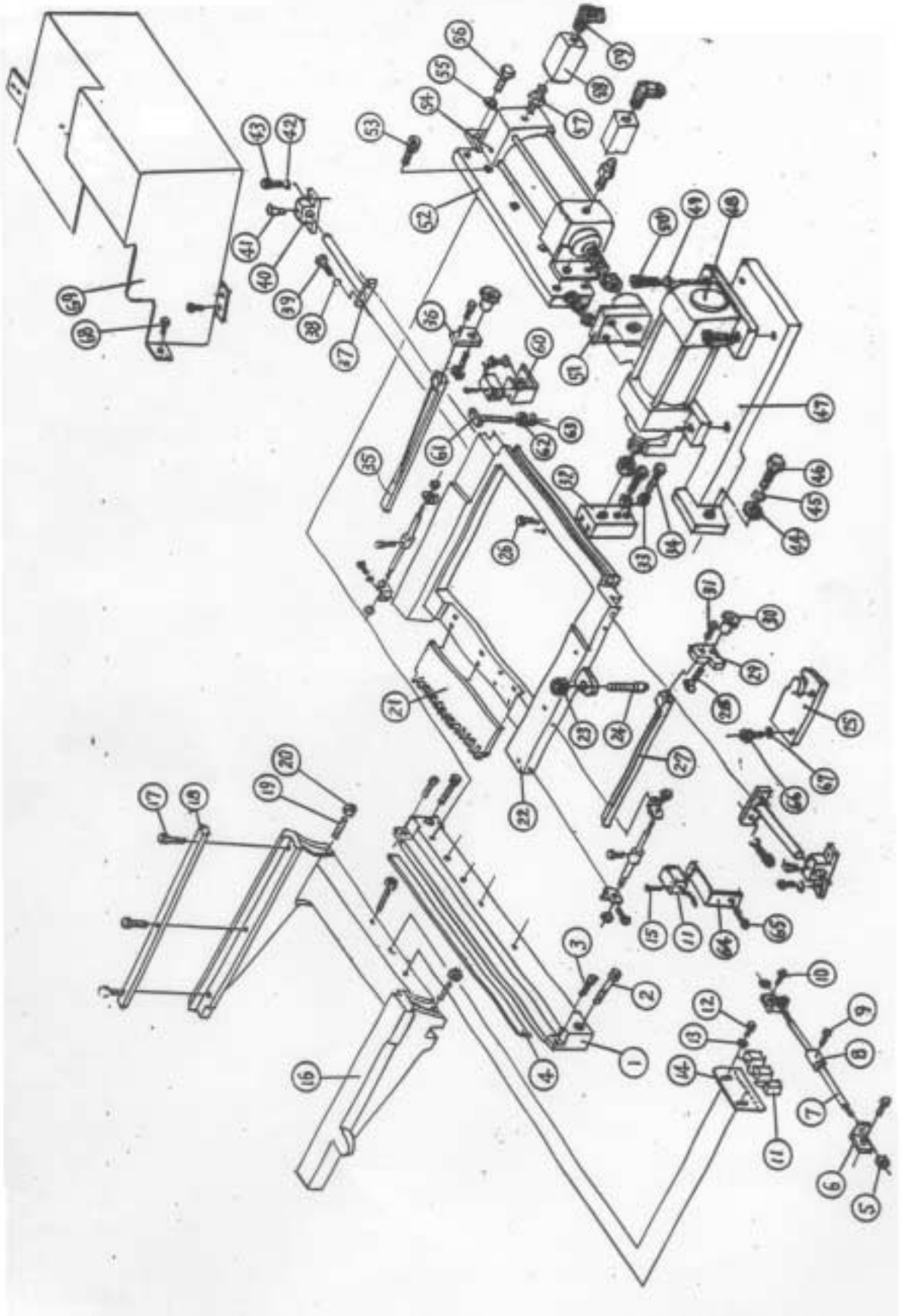
No	Description	Qty	Part No
1	Hex Head Socket Screw 5/16" x 2"	4	
2	Spindle Set Fixing Metal Bar (Lower)	1	1640088
3	Washer	16	40133
4	Thrust Bearing NJK-T9-17	16	
5	Lower Metal Bar Brass	16	40132
6	Right Helical Gear Spindle	4	40129
7	Blocking Gear Spindle Right Helical	2	40131
8	Left Helical Gear Spindle	2	40130
9	Left Helical Gear Spindle	2	40128
10	Blocking Gear Spindle Left Helical	2	40127
11	Right Helical Gear Spindle	4	40126
12	Spindle Set Fixing Metal Bar (Upper)	1	1640087
13	Upper Metal Bar Brass	16	40154
14	Brass Vertical Adjusting Screw	16	40136
15	Vertical Adjusting Screw Collar	16	40135
16	Dovetail Tenon Cutter Right Thread	8	
17	Dovetail Tenon Cutter Left Thread	8	
18	Adjusting Brass Fixing Screw 5/16" x 34mm	16	40134



No	Description	Qty	Part No
1	Hexagonal Screw 5/16" x 1"	1	
2	Main Shaft Belt Wheel Washer	4	40142
3	Wheel Disk	2	40093
4	Belt Wheel	4	40092
5	Oil Retainer 22-39-9	4	
6	Hex Head Socket Screw ¼" x 1"	12	
7	Gearbox Bearing Cap (Lower)	4	40091
8	Packing Paper	4	
9	Main Shaft Bearing Retainer (Lower)	4	40141
10	Ball Bearing 6305	4	
11	Main Shaft (Longer)	2	40139
12	Square Key ¼"	2	
13	Square Key ¼"	4	
14	Square Key ¼"	2	
15	Main Shaft (Shorter)	2	40140
16	Main Gear Shaft Collar	4	40090
17	Main Shaft Gear	4	40138
18	Main Shaft Retainer (Upper)	4	
19	Hex Head Socket Screw 5/16" x 1"	12	
20	Main Helical Gear Box	1	163004
21	Ball Bearing 6305	4	
22	Packing Paper	4	
23	Gearbox Bearing Ca (Upper)	4	40089
24	Flat Head Screw ¼" x ¾"	12	
25	Packing	1	
26	Gear Box	1	163005
27	Gear Box Fixing washer	4	40143
28	Hex Head Screw ½" x 2"	4	
29	Headless Hex Socket Screw 5/16" x 1-1/4"	16	
30	Acrylate Plate 5mm x 103mm	1	
31	Hex Head Socket Screw ¼" x 1-1/4"	6	
32	Flat Head Screw 3/16" x ¾"	20	
33	Oil Case Window Frame	1	16-70146
34	Brazing Brass Screw Bolt 3/8" Thread	16	40148
35	O-Ring Ø8mm	16	
36	Hexagonal Nut 3/8" Thread 16	16	
37	Oil Cup Set	2	
38	Shaft	4	40144
39	Shaft Metal	4	40094
40	Hex Head Socket Screw ¼" x ½"	8	
41	Spring Pin	4	
42	Shaft Screw Socket	4	40145
43	O-Ring Ø8mm	4	
44	Spring Ø0.4 x Ø4mm	4	
45	Steel Ball	4	
46	Glass Oil Cup	1	
47	Fixing Block for Oil Cup	1	

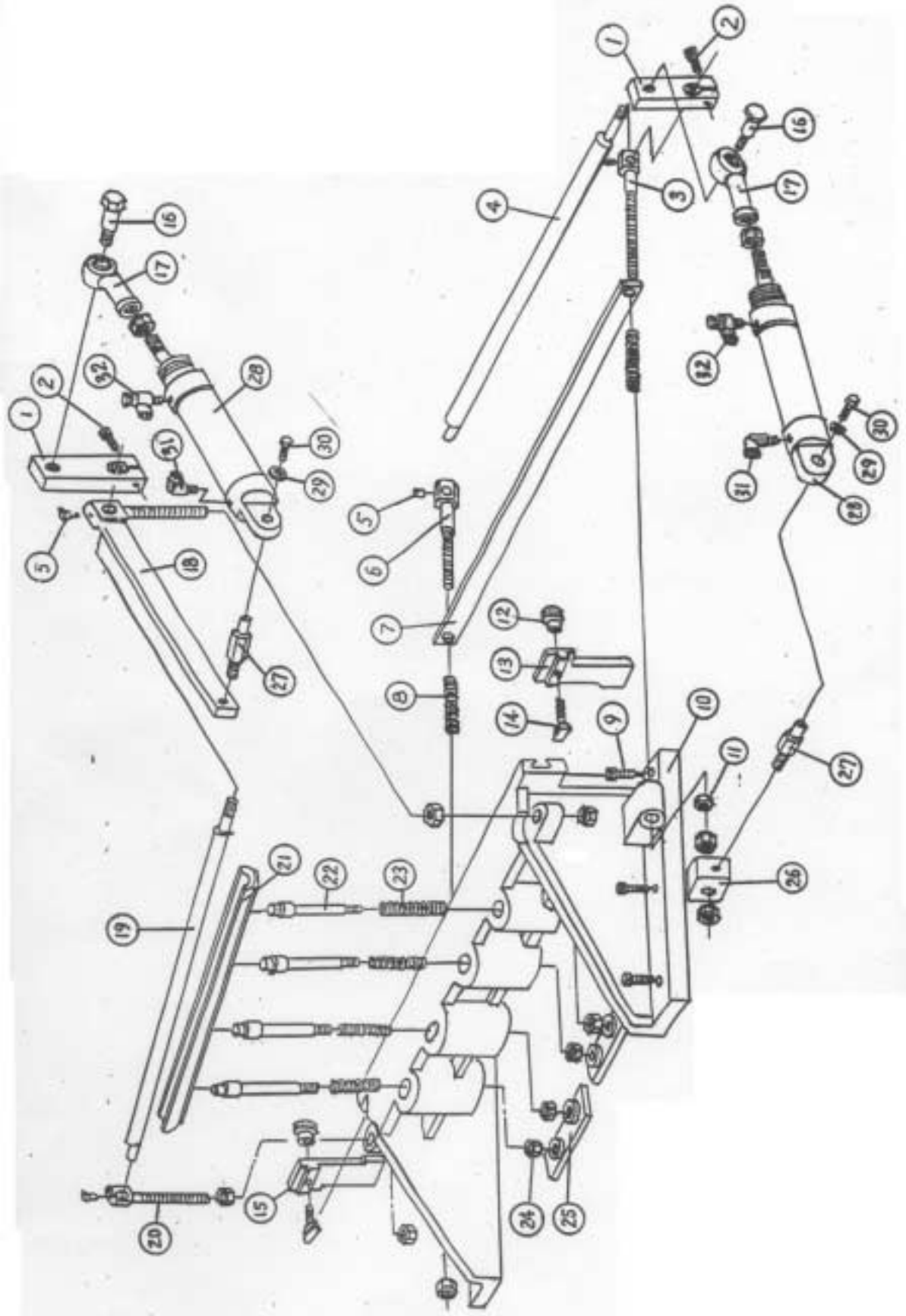


No	Description	Qty	Part No
1	Hex Head Socket Screw 5/16" x 1-1/4"	8	
2	Motor Bracket Back Arm	2	40095
3	Motor Bracket (Right Side)	1	40096
4	Headless Hex Socket Screw 5/16" x 3/4"	4	
5	Motor Back Arm Shaft	2	40150
6	Hex Head Screw 5/16" x 1-1/4"	8	
7	Spring Washer 5/16"	8	
8	Motor 2HP	2	
9	Motor Belt Pulley	2	40101
10	Motor Belt Wheel Key	2	
11	Triangle Belt	6	
12	Hex Head Screw 5/16" x 1-3/4"	4	
13	Hexagonal Nut 5/16"	4	
14	Headless Hex Socket Screw 1/4" x 3/8"	2	
15	Motor Bracket Screw Collar	2	
16	Motor Adjustment Metal	2	
17	Motor Bracket Screw Collar	2	
18	Headless Hex Socket Screw 1/4" x 3/8"	2	
19	Motor Bracket Adjusting Screw Bolt	2	
20	Motor Bracket Fork	2	40097
21	Hexagonal Nut 5/16"	4	
22	Hex Head Screw 5/16" x 1-3/4"	4	
23	Motor Bracket Fork Fixing Bar	1	
24	Spring Washer 3/8"	2	
25	Hex Head Screw 3/8" x 1-1/4"	2	
26	Motor Adjustment Screw Nut	2	40098
27	Motor Bracket Fixing Screw Nut	2	
28	Headless Hex Socket Screw 1/4" x 1/2"	2	
29	Motor Adjusting Wheel	2	
30	Hex Head Socket Screw 5/16" x 1-1/4"	4	
31	Motor Bracket (Left Side)	1	40096-B



No	Description	Qty	Part No
1	Back Bracket Transverse Bar	1	1640102
2	Hex Head Socket Screw 5/16" x 2"	2	
3	Hex Head Socket Screw 5/16" x 3/4"	2	
4	Bracket Wedge Strip Plate	1	1640155
5	Hexagonal Nut 3/16"	6	
6	Angle Plate for Limit Sensor Bar	6	
7	Limit Sensor Bar	3	
8	Limit Sensor Sleeve	3	
9	Hex Head Screw 3/16" x 3/4"	3	
10	Hex Head Screw 1/4" x 3/4"	6	
11	Sensor	5	
12	Hex Head Socket Screw 1/4" x 3/4"	2	40105
13	Flat Washer 1/4"	2	
14	Limit Sensor Adjusting Plate	1	
15	Round Head Screw M3 x 25L	10	
16	Lower Base Bracket	1	163006
17	Hex Head Socket Screw 1/4" x 1"	3	
18	Triangle Wedge Bar	1	40103
19	Headless Hex Socket Screw 5/16" x 1-3/4"	4	
20	Hexagonal Nut 5/16"	4	
21	Brass Pin Fork	1	1640161
22	Middle Bed Bracket Plate	1	163007
23	Hexagonal Nut 5/8"	1	
24	Guide Screw	1	40162
25	Mould-Guide Plate	1	
26	Hex Head Socket Screw 5/16" x 1"	2	
27	Lever (Right Side)	1	40109-A
28	Guide Plate Screw	2	40163
29	Top Bed Levering Block (Right Side)	1	40110-A
30	Guide Plate Screw Socket	2	40164
31	Hex Head Socket Screw 5/16" x 3/4"	2	
32	Adjusting Block	1	40108
33	Hexagonal Nut 1/2"	2	
34	Hex Head Screw 1/2" x 2	2	
35	Lever (Left Side)	1	40109-B
36	Top Bed Levering Block (Left Side)	1	40110-B
37	Shock Absorbing Bar	2	
38	Spring Washer 5/16"	4	
39	Hex Head Screw 5/16" x 1"	4	
40	Shock Absorbing Bar Fixing Set	2	
41	Oil Cup (Small) 1/4"	2	
42	Spring Washer 5/16"	4	
43	Hex Head Screw 5/16" x 1"	4	
44	Flat Washer 1/2"	2	

45	Spring Washer 1/2"	2	
46	Hex Head Screw 1/2" x 1-1/4"	2	
47	Forward/Backward Air Cylinder Base	2	
48	Forward/Backward Air Cylinder #63 x 60 ST		
49	Spring Washer 3/8"	4	
50	Hex Head Screw 3/8" x 1"	4	
51	Right/Left Air Cylinder Valve		
52	Right/Left air Cylinder Base		
53	Hex Head Screw 5/16" x 1"	3	
54	Right/Left air Cylinder #63 x 60ST	1	
55	Flat Washer 3/8"	4	
56	Hex Head Screw 3/8" x 3/4"	4	
57	Double-End Screw Connector 3/8PT	4	
58	Speed-Adjusting Valve FC1-3/8	4	
59	Compressor Connector 3/8PT	4	
60	Bracket for Limit Switch	1	
61	Clamping Stopper	1	
62	Hex nut 5/16"	1	
63	Spring Washer 5/16"	1	
64	Bracket for Limit Switch	1	
65	Hex Head Screw	2	
66	Hex Head Screw 1/2" x 1"	2	
67	Washer	2	
68	Hex Head Screw 5/16" x 3/4"	5	
69	Safety Cover	1	



No	Description	Qty	Part No
1	Clamping Unit	2	
2	Hex head Socket Screw 5/16" x 3/4"	1	
3	Lever Shaft Screw (Long)	1	1640170
4	Skew Lever Shaft (Short)	1	1640172
5	Oil Ball 1/4"	4	
6	Lever Shaft Screw (Short)	1	40171
7	Clamping Plate	1	1640169
8	Spring	2	
9	Hex Head Socket Screw 3/8" x 1-1/4	6	
10	Top Bed Bracket	1	1630008
11	Hexagon Nut 5/8"	6	
12	Guide Plate Screw Socket	2	40164
13	Guide End Plate (Right Side)	1	40114-A
14	Guide Plate Screw	2	40163
15	Guide End Plate (Left Side)	1	40114-B
16	Universal Valve Screw		
17	Universal Valve PHS-14B		
18	Lever Shaft Screw (Long)	1	40167
19	Skew Lever Shaft (Long)	1	1640166
20	Lever Shaft Screw (Short)	1	40168
21	Semi-Circle Pressing Bar	1	1640112
22	Pressing Bracket Adjusting Screw	4	40165
23	Spring	4	
24	Hexagon Nut 5/8"	4	
25	End Clamp Plate	2	40111
26	Clamping Block	1	
27	Clamping Screw	2	
28	Clamping Cylinder Ø50 x 75ST	2	
29	Flat Washer 1/4	2	
30	Hex Head Socket Screw 1/4" x 3/4"	2	
31	Compressor Quick Connector 1/4PT	2	
32	Compressor Adjusting Quick Connector 1/4PT	2	